

# Getting Started

## Getting Started with Altacast

### 1. Install AltaCast

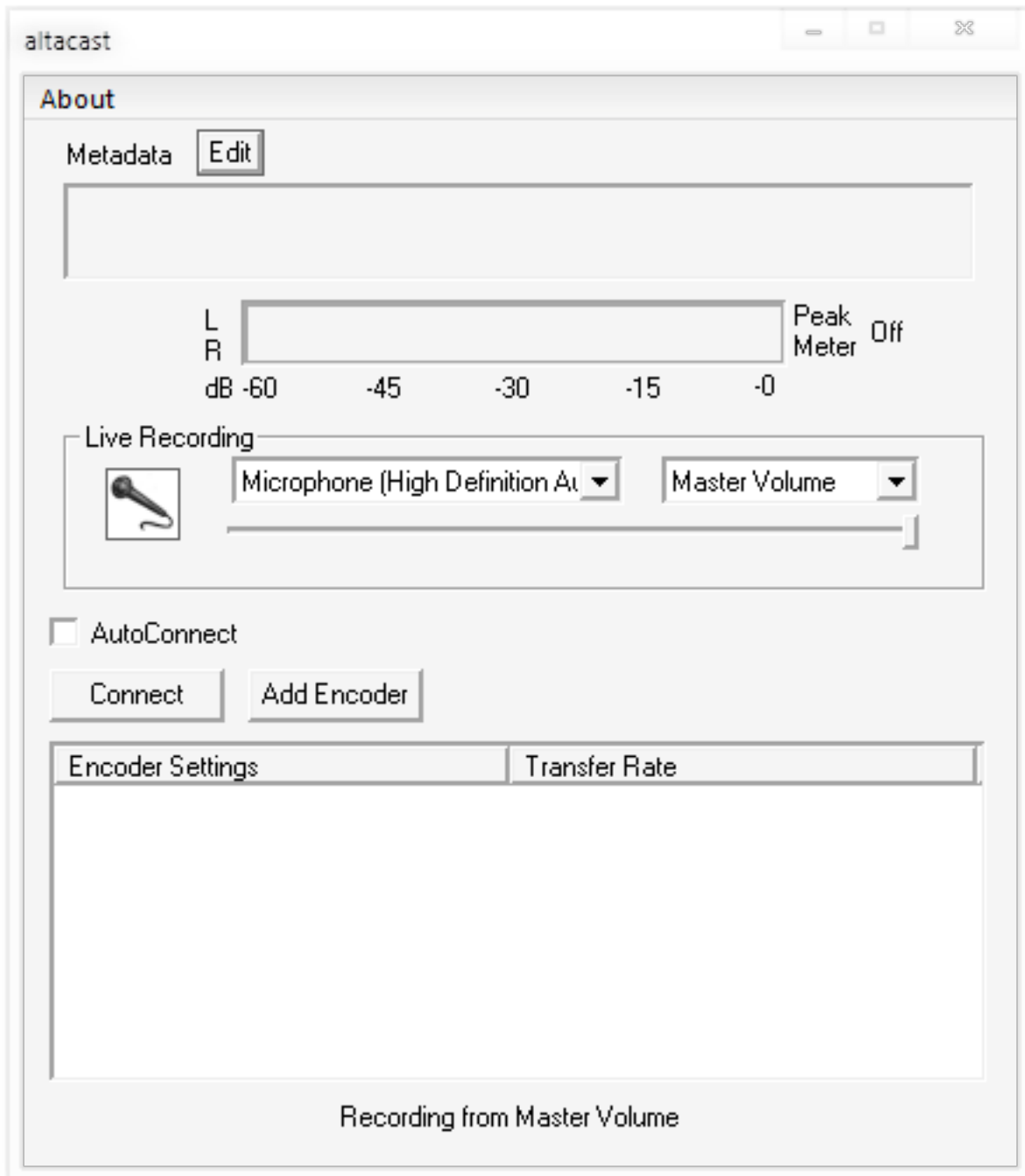
For this guide we'll be using the stand alone version of AltaCast, available from the [AltaCast website](#).

You may need to also download and install MP3 and AAC encoders. Links to the encoders can be found on AltaCast's website in the downloads section.

### 2. Configure AltaCast for streaming.

a. Launch AltaCast

# Getting Started



b. Click "Add Encoder", then double click the row that is added to the bottom table to open the configuration window.

# Getting Started

The image shows a 'Configuration' dialog box with three tabs: 'Basic Settings', 'YP Settings', and 'Advanced Settings'. The 'Basic Settings' tab is active, showing a 'General Settings' section with the following fields and values:

Bitrate	64	<input checked="" type="checkbox"/> Use bitrate
Quality	0	
Samplerate	44100	
Channels	2	* 1 for Mono, 2 for Stereo <input checked="" type="checkbox"/> Joint Stereo
Encoder Type	MP3 Lame	
Server Type	Shoutcast	
Server IP	s1.vocast.com	
Server Port	7000	
Encoder Password	XXXXXXXXXX	
Mountpoint		* Required for Icecast servers
Reconnect Seconds	10	

At the bottom of the dialog are 'OK' and 'Cancel' buttons.

On the Configuration window, in the Basic Settings tab:

Tick "Use Bitrate", then enter your server's maximum bitrate in the bitrate field.

Change "Encoder Type" to either MP3 Lame or AAC.

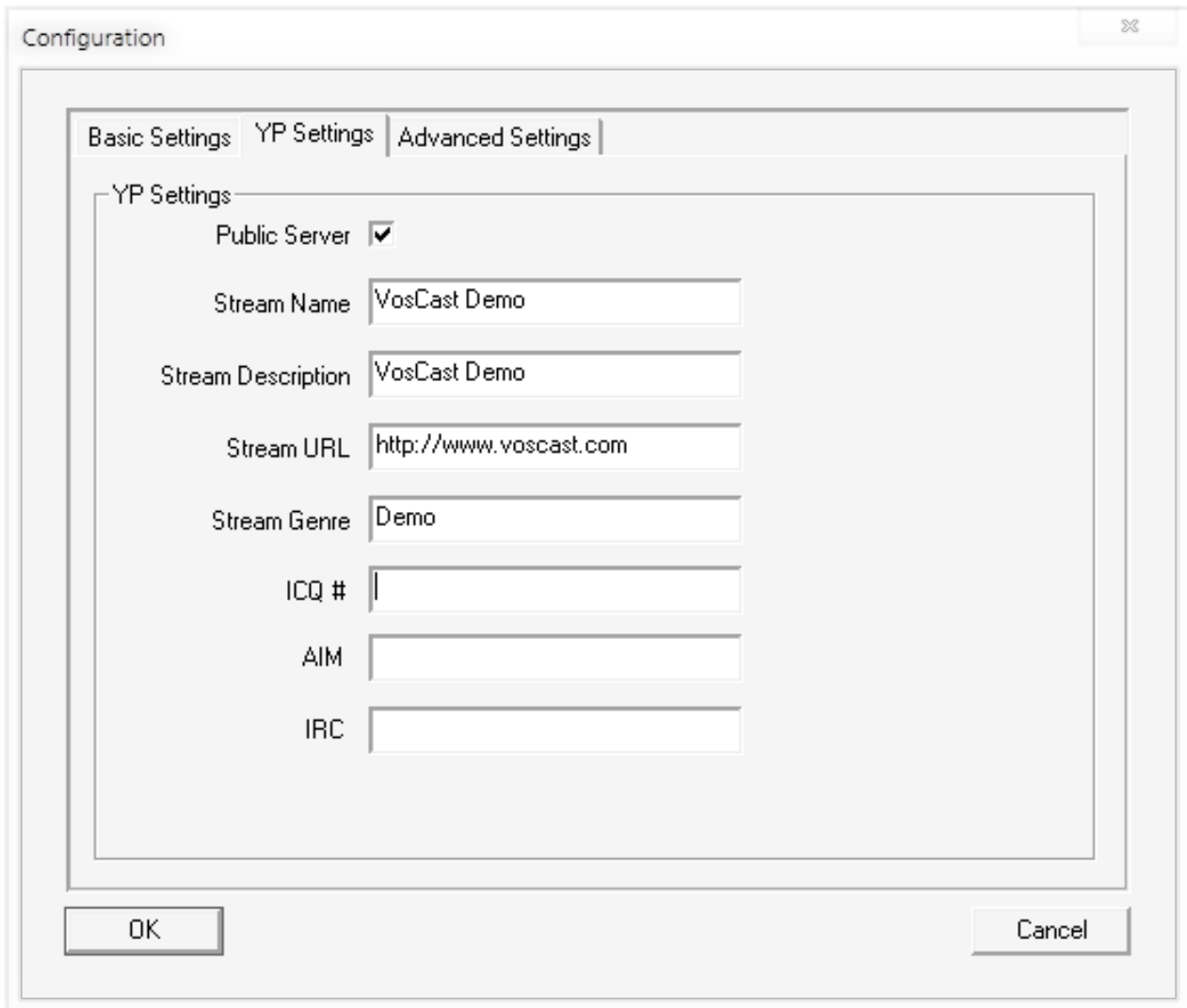
Change "Server Type" to Shoutcast.

Enter your server's address, port, and password into "Server IP", "Server Port" and "Encoder Password".

Erase all the text in "Mountpoint" leaving the field blank.

d. On the Configuration window, in the YP tab customise "Stream Name" and the other fields to fit your server.

# Getting Started



The image shows a 'Configuration' dialog box with three tabs: 'Basic Settings', 'YP Settings', and 'Advanced Settings'. The 'YP Settings' tab is active. It contains the following fields:

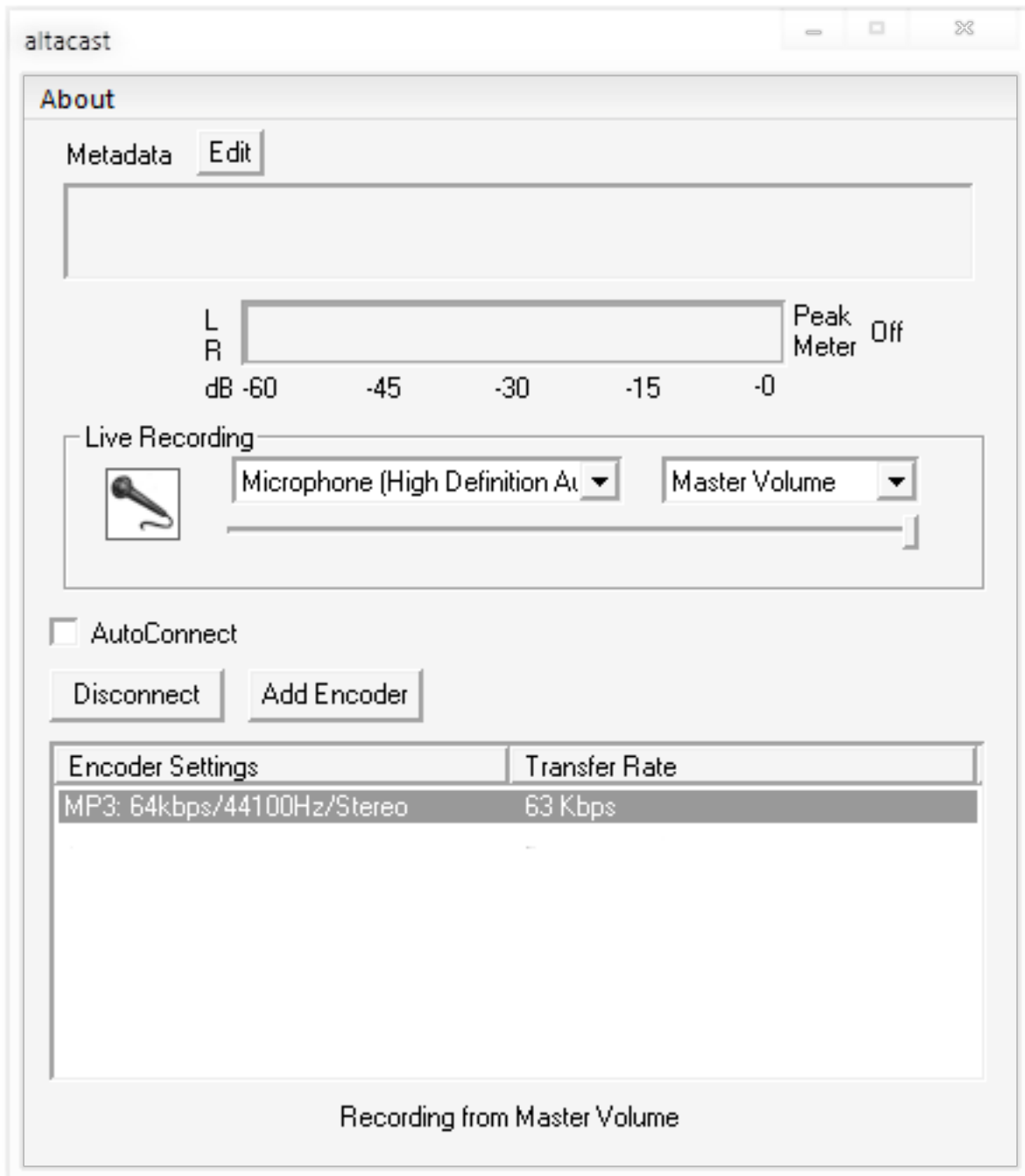
- Public Server:** A checked checkbox.
- Stream Name:** A text box containing 'VosCast Demo'.
- Stream Description:** A text box containing 'VosCast Demo'.
- Stream URL:** A text box containing 'http://www.vocast.com'.
- Stream Genre:** A text box containing 'Demo'.
- ICQ #:** An empty text box.
- AIM:** An empty text box.
- IRC:** An empty text box.

At the bottom of the dialog are 'OK' and 'Cancel' buttons.

Click OK to save your configuration settings and close the Configuration window.

e. Click Connect to start streaming to the server.

# Getting Started



f. To set your song metadata, click the "Edit" button next to "Metadata". You can then update your server's Metadata either manually, or by updating from a URL/file, or from the title of another window.

# Getting Started

Set / Lock Metadata

Manually Enter Metadata  Lock Metadata

Metadata

Append String

\* may take a song change to take affect

External Metadata

URL

File

Disabled

Interval (secs)

Grab Metadata From Window Title

Window Class

Truncate everything after and including this string

Truncate everything before and including this string

Unique solution ID: #1040

Author: Bryan

Last update: 2013-07-17 19:29