

Getting Started

Getting Started with Winamp

1. Install Winamp.

For this tutorial, we are going to use Winamp. You can download Winamp from the [Nullsoft Website](#).

Please note that while Winamp has a Mac OSX version, the required plugin does not. Winamp cannot be used to stream from OSX. For an alternative, please consider [Nicecast](#).

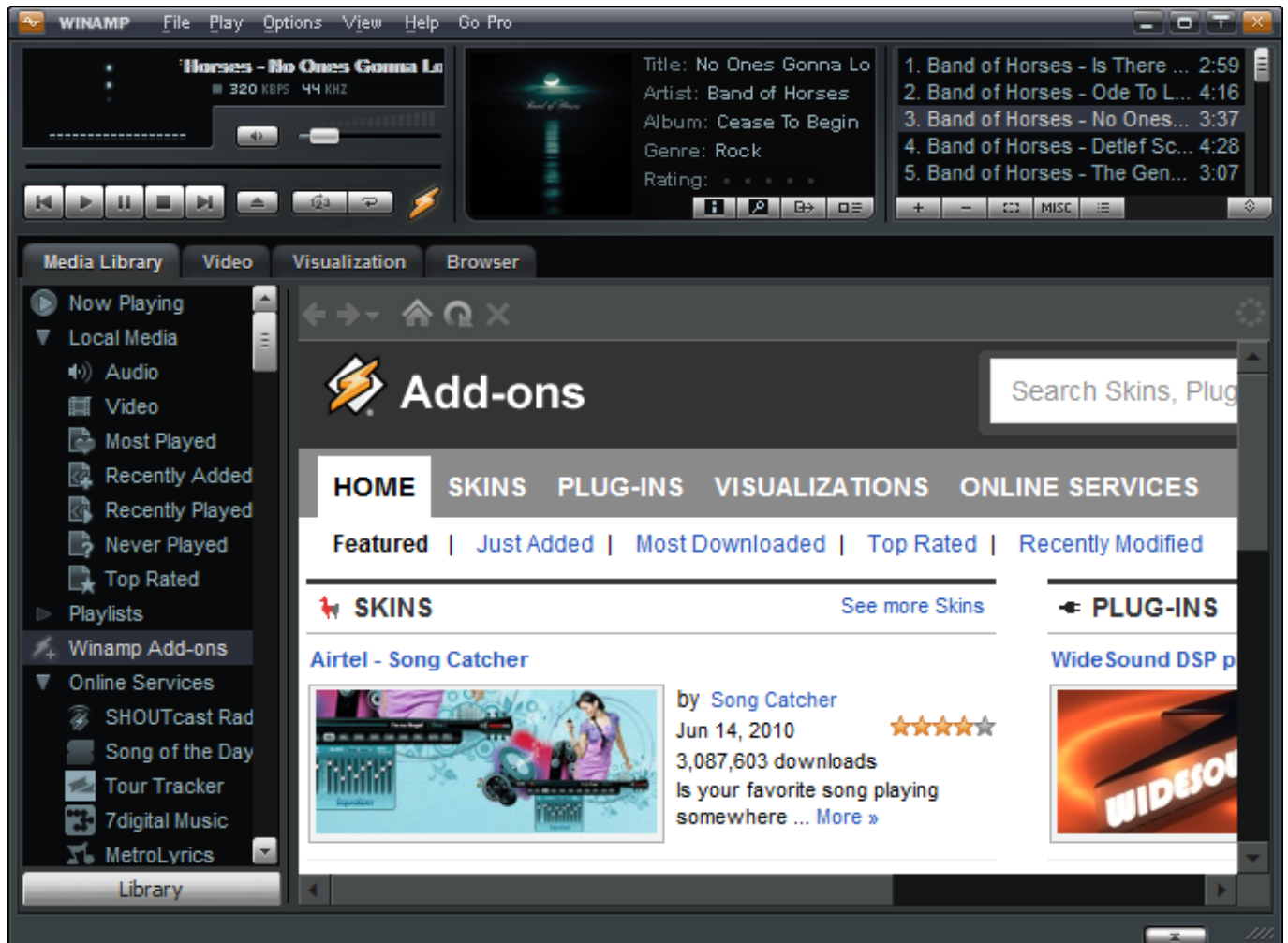
2. Install the SHOUTcast DSP Plugin.

Now download and install (using the default settings) the SHOUTcast DSP Plugin. You can download this plugin [here](#).

3. Enable the SHOUTcast DSP Plugin.

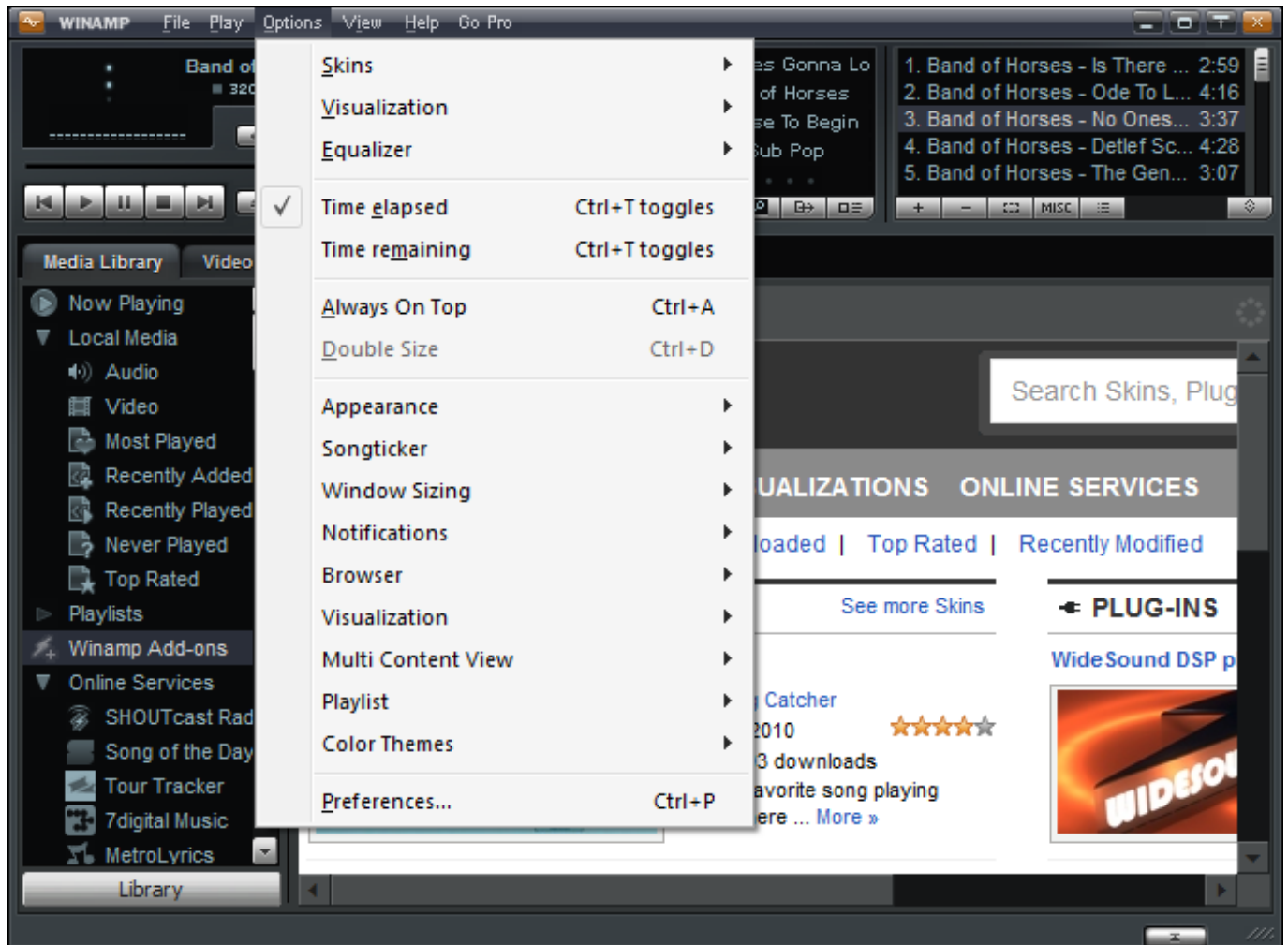
a. Launch Winamp.

Getting Started



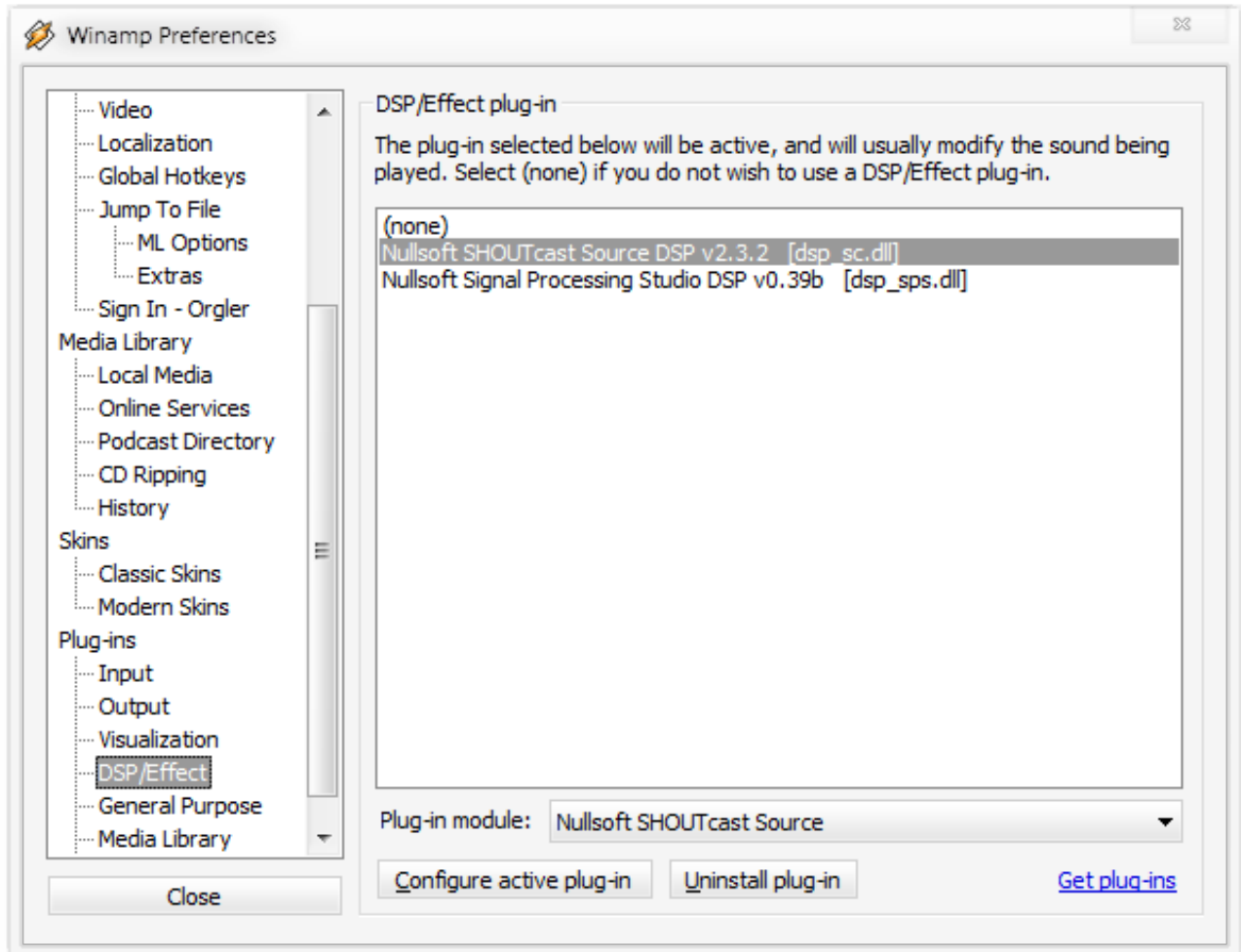
b. Open "Preferences" (Options -> Preferences, or CTRL+P).

Getting Started



c. In the left menu, select "DSP/Effect". Then click (In the box on the right) "Nullsoft SHOUTcast Source DSP v2.3.3 [dsp_sc.dll]". Please note that the version shown will change as newer versions are released.

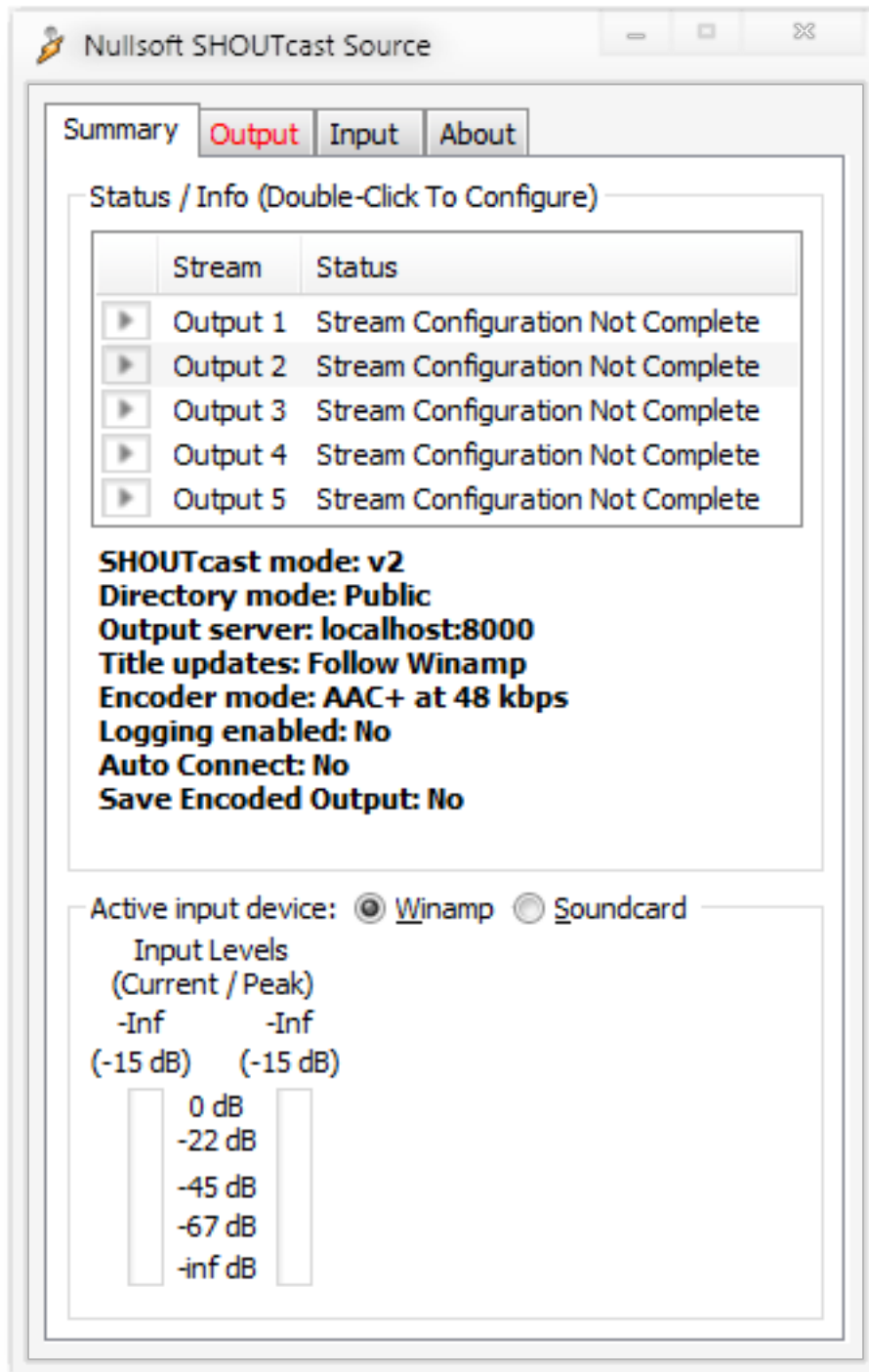
Getting Started



d. Close the Preferences window (Press "Close")

e. You should now have the Nullsoft SHOUTcast Source window running alongside Winamp. This will now automatically run every time you start Winamp.

Getting Started



4. Configure SHOUTcast Source (The SHOUTcast Source Plugin).

The first settings you will need to modify are the connection settings.

- Select "Output" and then "Login".
- Input your server Address, Port, and Password. (This information can be found within your VosCast control panel overview). Please review this information to

Getting Started

ensure it has been entered correctly.

The screenshot shows the 'Nullsoft SHOUTcast Source' application window. The 'Output' tab is selected, showing a list of output streams (Output 1 to Output 5) and a status box indicating 'Stream Configuration Not Complete'. Below this, the 'Directory' tab is selected, showing the 'Output Configuration' section. This section includes fields for 'Server Address' (s1.vocast.com), 'Port' (7000), and 'Stream ID' (1). There are also fields for 'DJ / User ID' and 'Password' (masked with dots). Checkboxes for 'Automatic reconnection on connection failure' and 'Use SHOUTcast v1 mode (for legacy servers)' are checked. A 'Reconnection timeout' of 1 second is set. A note at the bottom explains the format for the DJ login and password.

Nullsoft SHOUTcast Source

Summary **Output** Input About

Output

Output 1
Output 2
Output 3
Output 4
Output 5

Status
Stream Configuration Not Complete

☐ Auto Connect **Change Name**

Login **Directory** Encoder Titles Artwork Logs

Output Configuration

Server Address Port Stream ID
s1.vocast.com 7000 1

DJ / User ID Password
.....

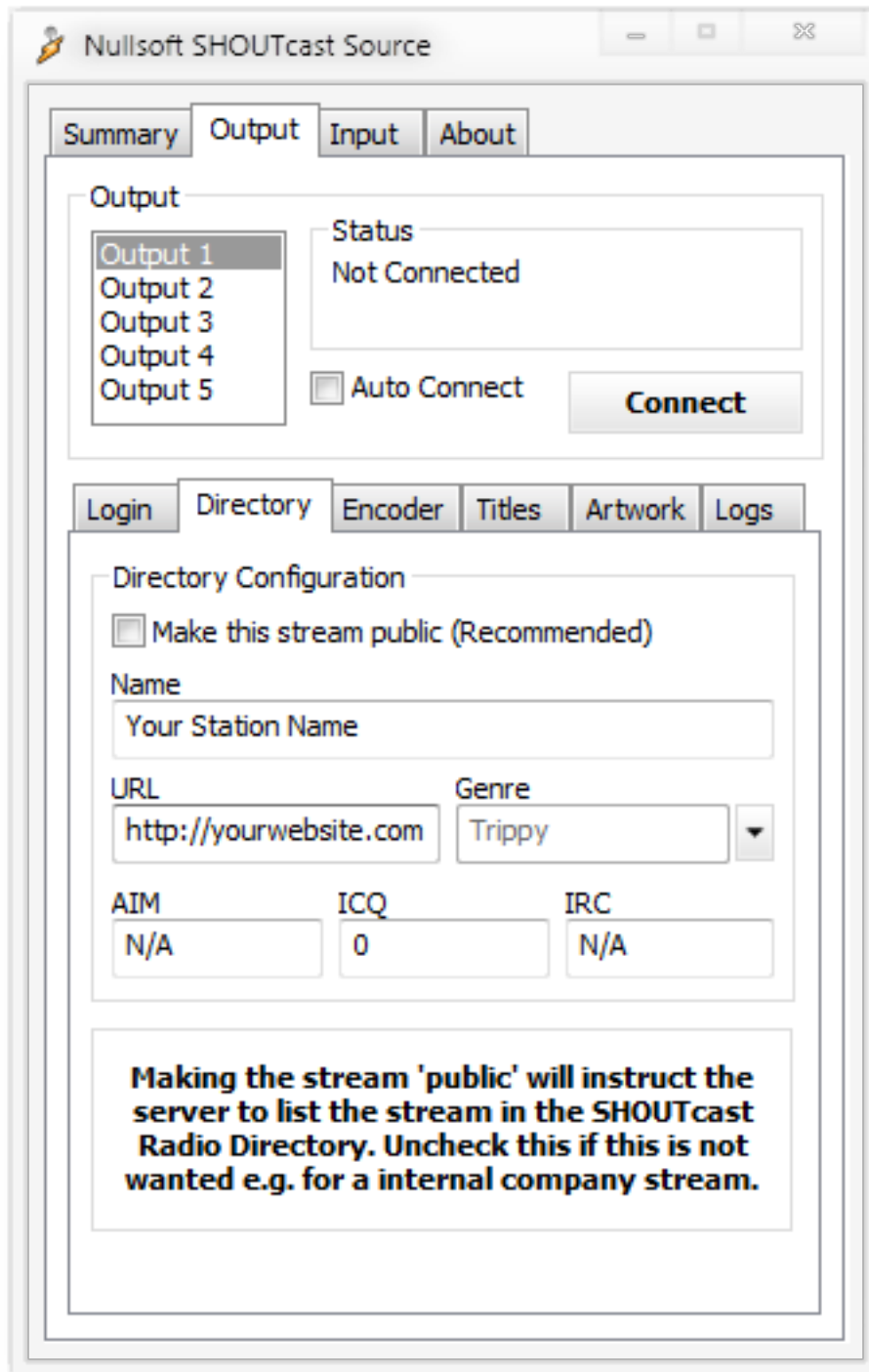
☒ Automatic reconnection on connection failure
Reconnection timeout 1 seconds
☒ Use SHOUTcast v1 mode (for legacy servers)

**When the DJ password is formatted as
<djlogin>:<djpassword> e.g. dj_1:noise**

**Enter <djlogin> in 'DJ / User ID' e.g. dj_1
Enter <djpassword> in 'Password' e.g. noise**

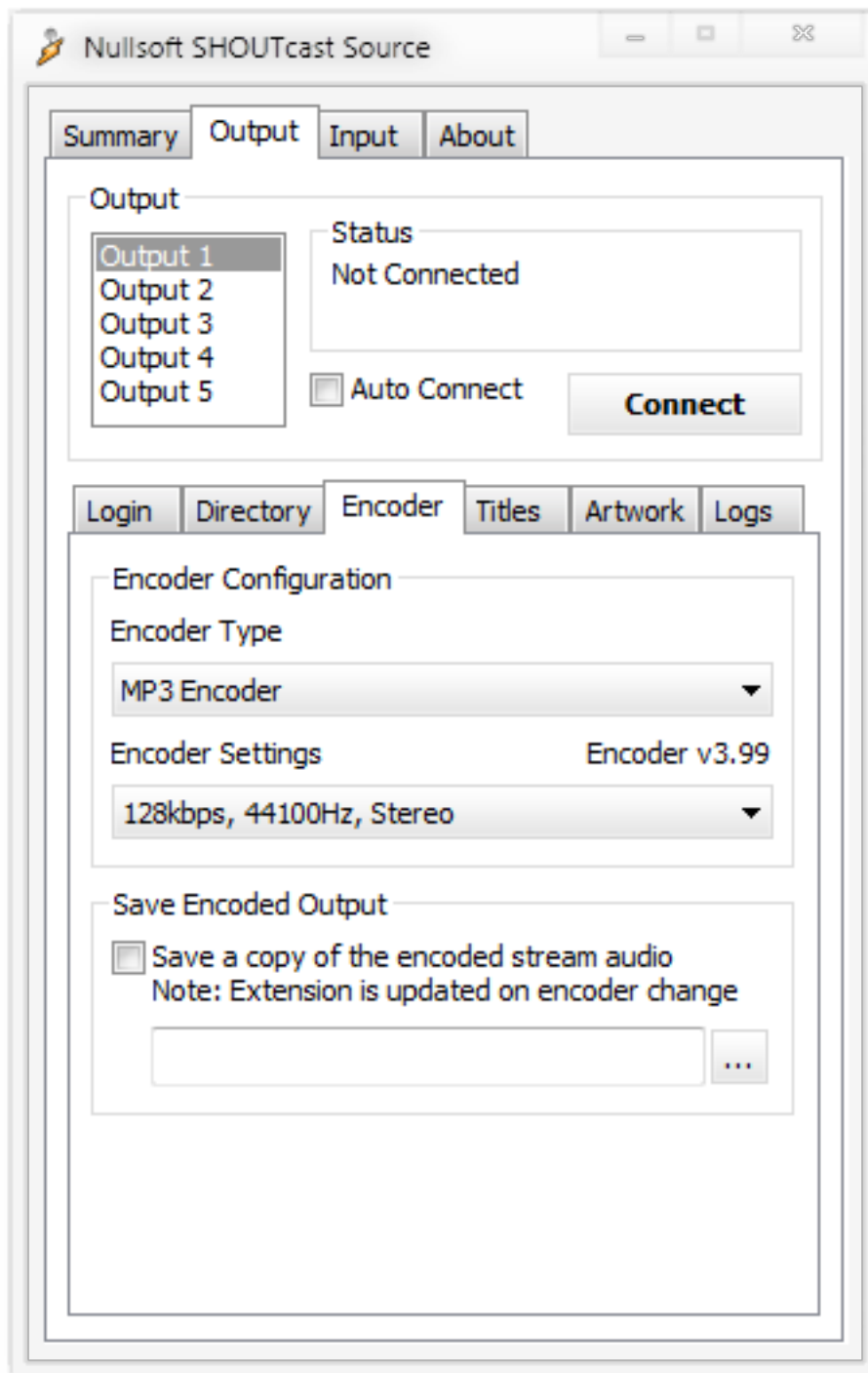
c. Select "Directory", and fill in the appropriate information. Set AIM, ICQ and IRC to N/A or 0 if you don't have either of them, or don't know what they are. Tick "Make this stream public (Recommended)" to be listed on the SHOUTcast directory.

Getting Started



d. Select "Encoder", and select "MP3 Encoder" as the Encoder Type. For the Encoder Settings, match it to the plan you purchased with your VosCast account (the bitrate).

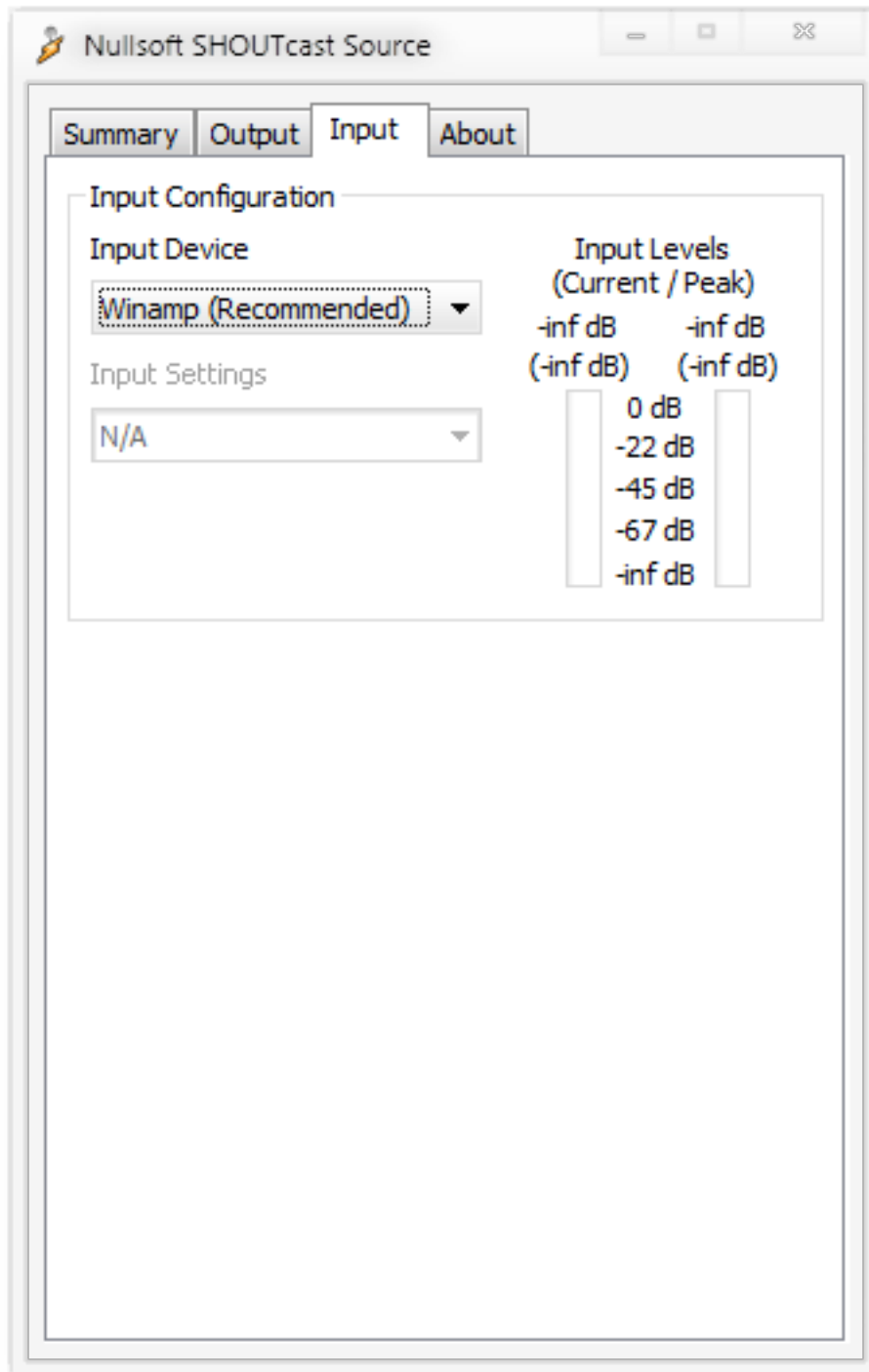
Getting Started



5. How to DJ.

a. Select "Input".

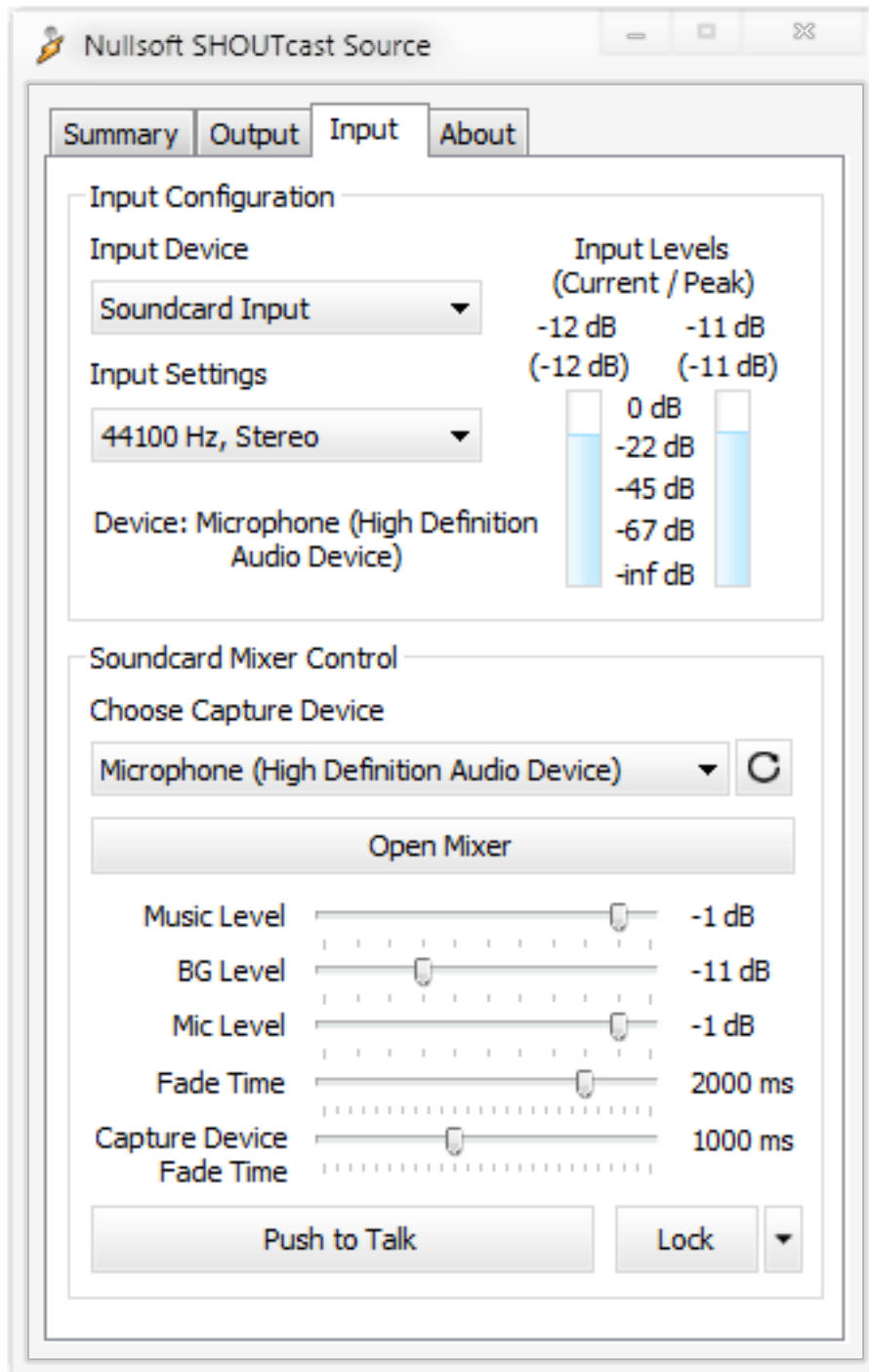
Getting Started



b. On this tab, you can select "Winamp (Recommended)" or "Soundcard Input" under the Input Device.

Having "Winamp (Recommended)" selected will stream the music you are presently playing in Winamp. Having "Soundcard Input" selected will stream audio from your microphone, or the input device you select.

Getting Started



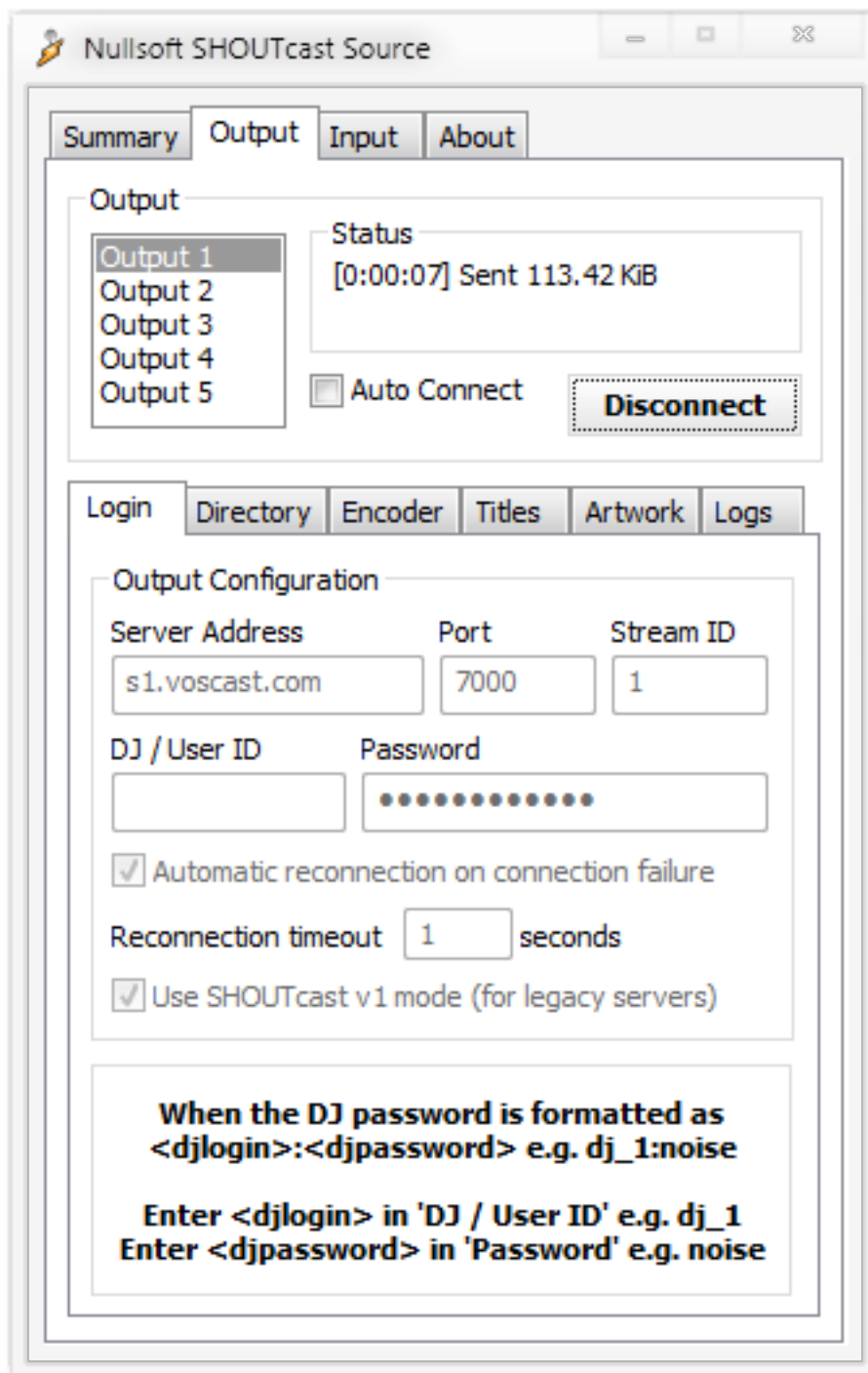
c. For streaming from your microphone, select "Soundcard Input". You should match the "Input Settings", to match the "Encoder Settings" you set earlier under the Output -> Encoder tab.

d. For broadcasting, to play music, switch the input device to "Winamp (Recommended)". When you want to talk, select "Soundcard Input". Switch the Input Device back to "Winamp (Recommended)" for the moment.

6. Start Broadcasting.

Getting Started

To connect, select "Output", and press the "Connect" button. You should now be streaming the music you presently have playing in Winamp.



Unique solution ID: #1011

Author: Dan Z

Last update: 2014-12-03 21:56